



GAT MONTHLY MEMBERSHIP PROGRESS REPORT

Results as of: 4/30/2024

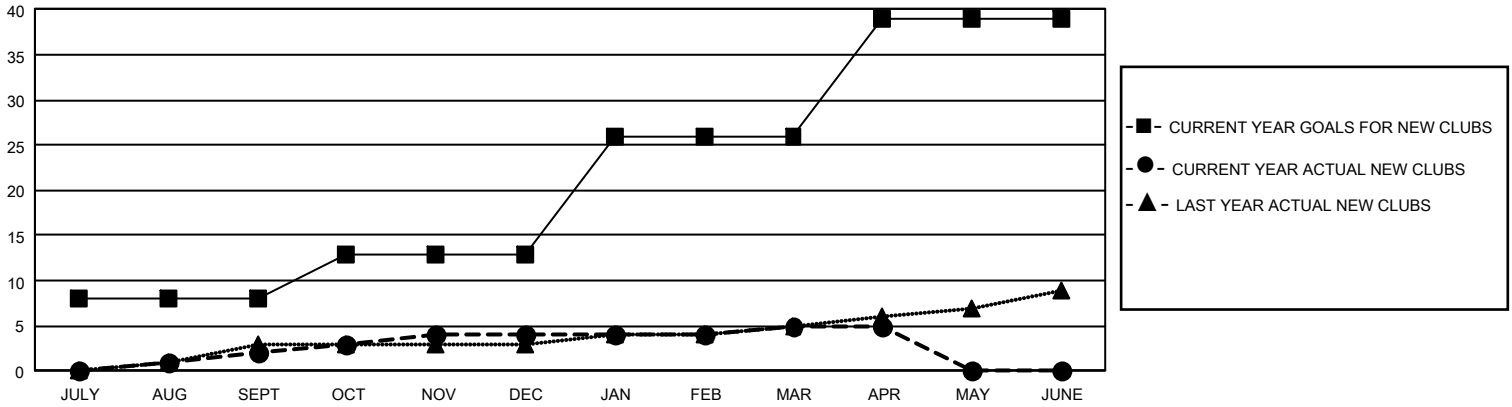
GMT Constitutional Area 1, Group B

REPORT DOES NOT INCLUDE CLUBS IN UNDISTRICTED AREAS.

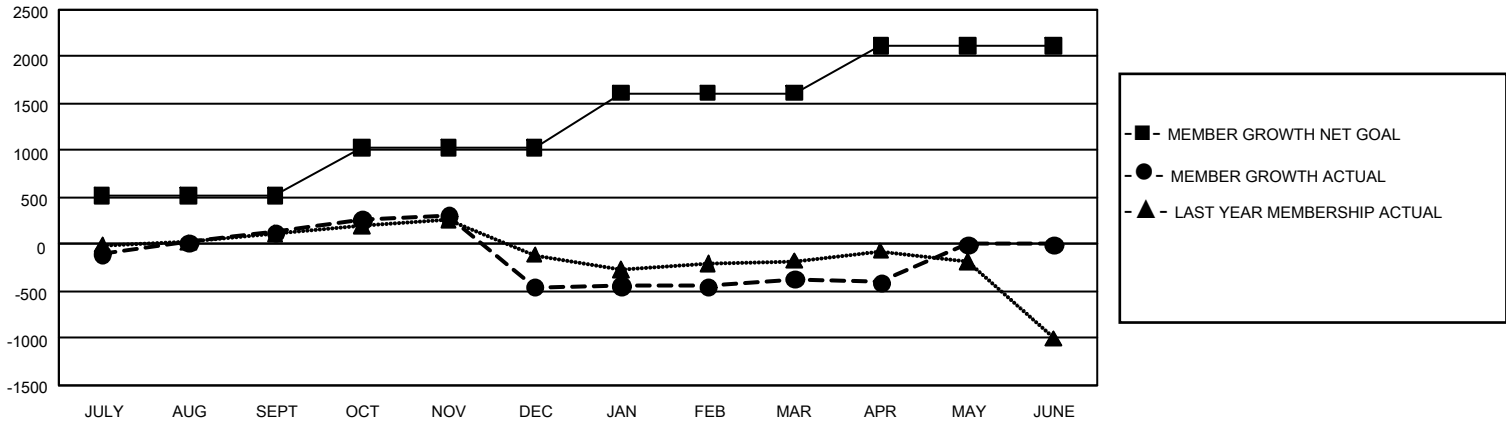
Clubs			
RESULTS FOR 2023-2024			
QUARTER	NEW CLUB GOAL	NEW CLUBS	DROPPED CLUBS
JULY/AUG/SEPT	24	2	5
OCT/NOV/DEC	15	2	26
JAN/FEB/MAR	39	1	8
APR/MAY/JUNE	39	0	1

Members			
RESULTS FOR 2023-2024			
QUARTER	MEMBER GROWTH NET GOAL	MEMBER GROWTH ACTUAL	DROPPED MEMBERS ACTUAL (including transfers)
JULY/AUG/SEPT	518	1,246	971
OCT/NOV/DEC	511	849	1,347
JAN/FEB/MAR	582	986	761
APR/MAY/JUNE	501	301	311

GOALS AND ACTUAL NEW CLUBS CUMULATIVE



GOALS AND ACTUAL MEMBERS CUMULATIVE



DROPPED CLUBS: 40	610 CLUBS OF 1,018 ADDED 1 OR MORE NEW MEMBERS	GENDER DISTRIBUTION	
		MALE 15,545 (57.67%) FEMALE 11,388 (42.25%) NON BINARY 3 (0.01%) PREFER NOT TO ANSWER 20 (0.07%)	
DROPPED MEMBERS		CLICK HERE FOR CUMULATIVE MEMBERSHIP DATA	
DECEASED 356 CLUB CANCELLED 318 OTHER 2,703 TOTAL 3,377	TOTAL FAMILY UNIT MEMBERS 5,522 FAMILY MEMBERS PAYING HALF DUES 2,911		